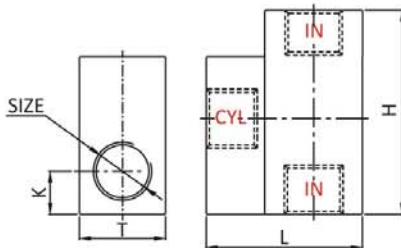
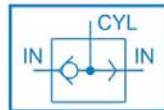
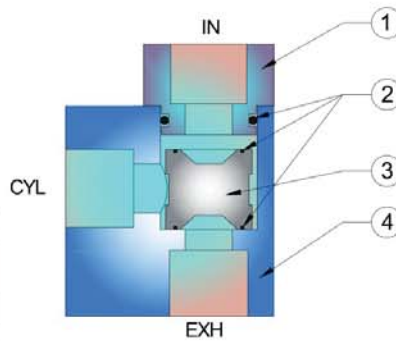


Shuttle Valve



Dimensions : (All Dimensions are in mm)

MODEL	SIZE	L	H	K	T
ASTV - 1	1/4"	47	38	15	25.5
ASTV - 3	1/2"	66	51	15.5	31.5



No.	Part Name	Material
1	Connector	Aluminum
2	'O' Ring	NBR
3	Piston	Aluminum with Rubber Moulded
4	Body	Aluminum Anodized

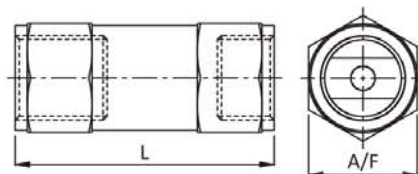
Features

▶▶ Shuttle valve is a type of valve which allows fluids to flow through it from one of two inlet sources.

Technical Specification

Model	ASTV - 1	ASTV - 4
Size	1/4"	1/2"
Orifice	6.5	12.5
Design	Piston / Poppet Type	
Pressure	10 Kg/cm ²	
Temperature	80 °C	
Leakage	Bubble Tight	
Media	Compressed Air (Filtered & Lubricated)	
Flow (NLPM) at 5 BAR	1100	2500
Weight (Kgs.)	0.110	0.220

Non Return Valve

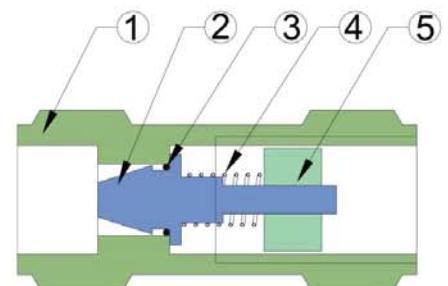


Dimensions : (All Dimensions are in mm)

MODEL	SIZE	L	A/F	Flow (NLPM) at 5 Bar	Weight (Kg.) Approx.
ANRV-0	1/8"	42	14	300	0.050
ANRV-1	1/4"	51	21	1100	0.040
ANRV-2	3/8"	61	22.5	1500	0.050
ANRV-3	1/2"	70	27	2500	0.080

Technical Specification

Model	ANRV - 0	ANRV - 1	ANRV - 2	ANRV - 3
Size	1/8"	1/4"	3/8"	1/2"
Pressure	10 Kg/cm ²			
Temperature	80 °C			
Leakage	Bubble Tight			
Media	Compressed Air (Filtered & Lubricated)			



No.	Part Name	Material
1	Body	Aluminum
2	Needle Pin	Aluminum
3	'O' Ring	NBR
4	Spring	S. S.
5	Nut	Nylon / Aluminum